

# THE MODERN HOUSE

ESTATE AGENTS

**Fieldend  
Twickenham, TW1  
£490,000 Freehold**



Fieldend in Strawberry Hill, Twickenham, is widely considered to be one of the most appealing of the Span estates (for more information on Span, please see the HISTORY section). The house being offered for sale is one of the best-located of the 51 houses on the secluded 5-acre site. Set in the middle of the site, away from the road, and overlooking communal gardens, the terraced house has the added benefit of being well maintained (a new roof was recently put on) and in good order throughout.

The ground floor, which is largely glazed both at the front and rear, incorporates an open-plan kitchen / dining / living and study area with original parquet flooring. There are three bedrooms and a bathroom on the first floor. There is also a large south-facing garden to the rear and, located close by, a garage. Parking at Fieldend is unrestricted and

there are always plenty of spaces available. As with all Span houses, this property offers light and airy spaces in a pleasant and natural setting.

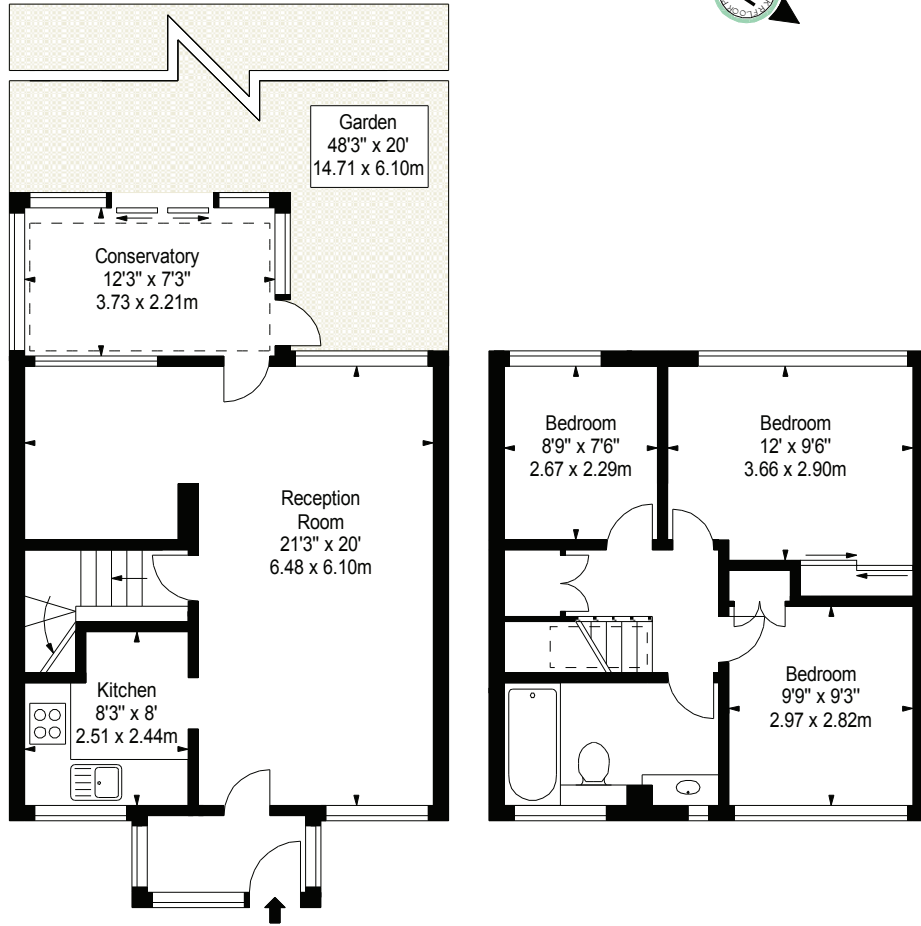
The Fieldend houses (a mixture of the T1 and T2 styles of Span housing) were built in 1960–61, and soon picked up a number of awards, including a Civic Trust Award and a Housing Gold Award. More recently, Fieldend has been designated a Conservation Area in recognition of its architectural merit and excellent landscaping. All residents of Fieldend pay an annual service charge (approximately £850 per year), which goes towards maintaining the communal gardens, painting the exteriors of the houses and window cleaning.

Strawberry Hill is a popular residential area in the London Borough of Richmond-Upon-Thames. Teddington and Twickenham high streets are both one mile away. Teddington has a good selection of restaurants, cafés and shops. Twickenham has a range of shops and pubs including a Waitrose and a farmers' market on Saturdays. The larger shopping areas of Kingston and Richmond are within easy reach. Fieldend is a ten-minute walk from the River Thames at Teddington Lock with access to the towpath and walking/cycling routes in both directions. Bushy Royal Park is also close by, next to Hampton Court Palace. Richmond Park is a few miles away. The local area is well served for schools, both private and state-run, junior and senior.

There are good transports links. Strawberry Hill train station (1/2 a mile away) offers services to London Waterloo with journey times of approximately 30 minutes. There are regular buses into Richmond (District Line Tube) and Kingston. It is a short drive to the M3, with good access to the M25 and M4.



**Field End, TW1**  
**Approx. Gross Internal Area \***  
**988 Ft<sup>2</sup> - 91.79 M<sup>2</sup>**



**Ground Floor**

**First Floor**

Illustration For Identification Purposes Only. Not to Scale

\* As Defined by RICS - Code of Measuring Practice

**B K R**

FLOORPLANS

(OFFICES THROUGHOUT THE UK)

T: 0845 257 2023  
[WWW.BKRFLOORPLANS.CO.UK](http://WWW.BKRFLOORPLANS.CO.UK)  
2007